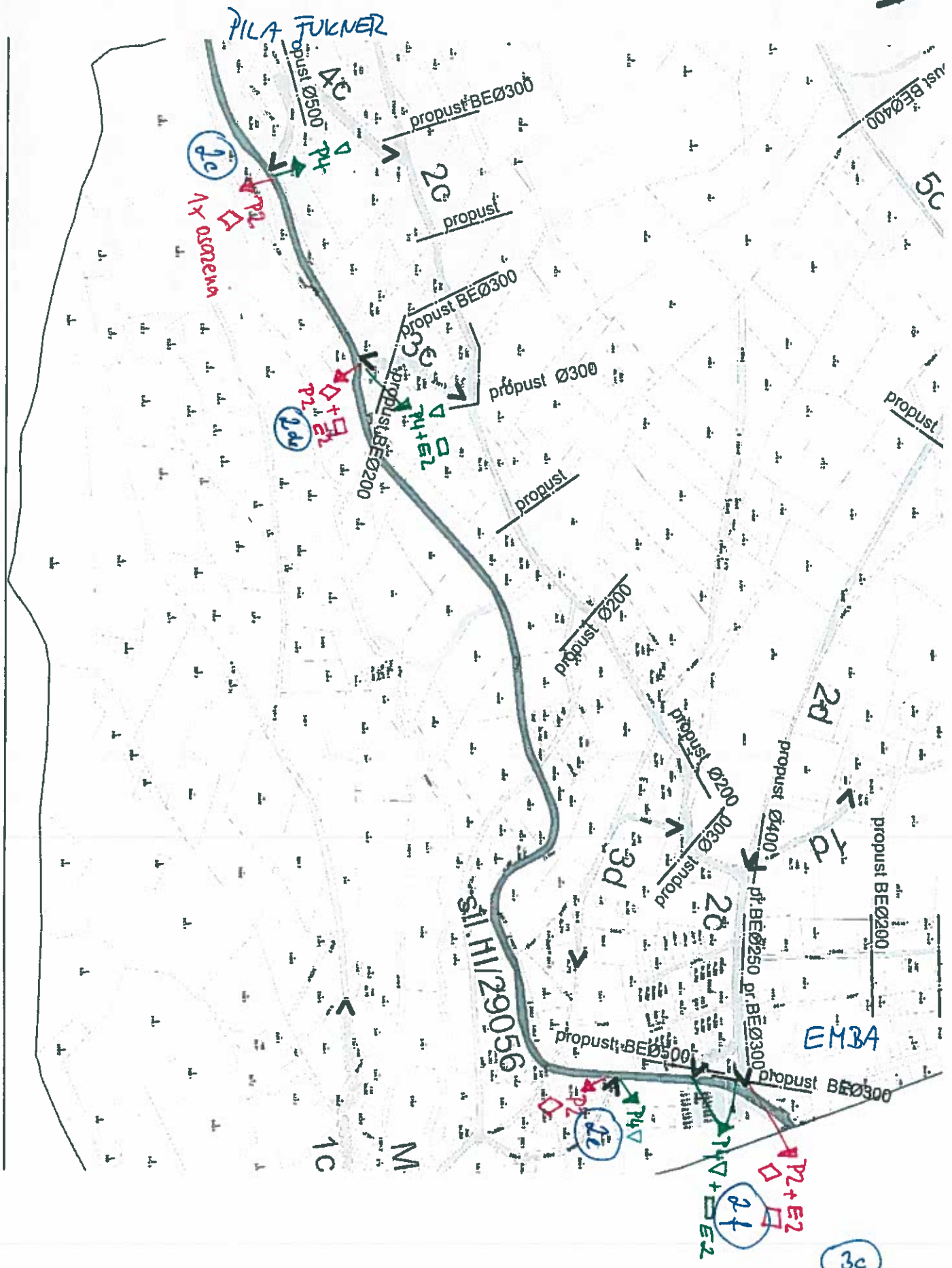


A



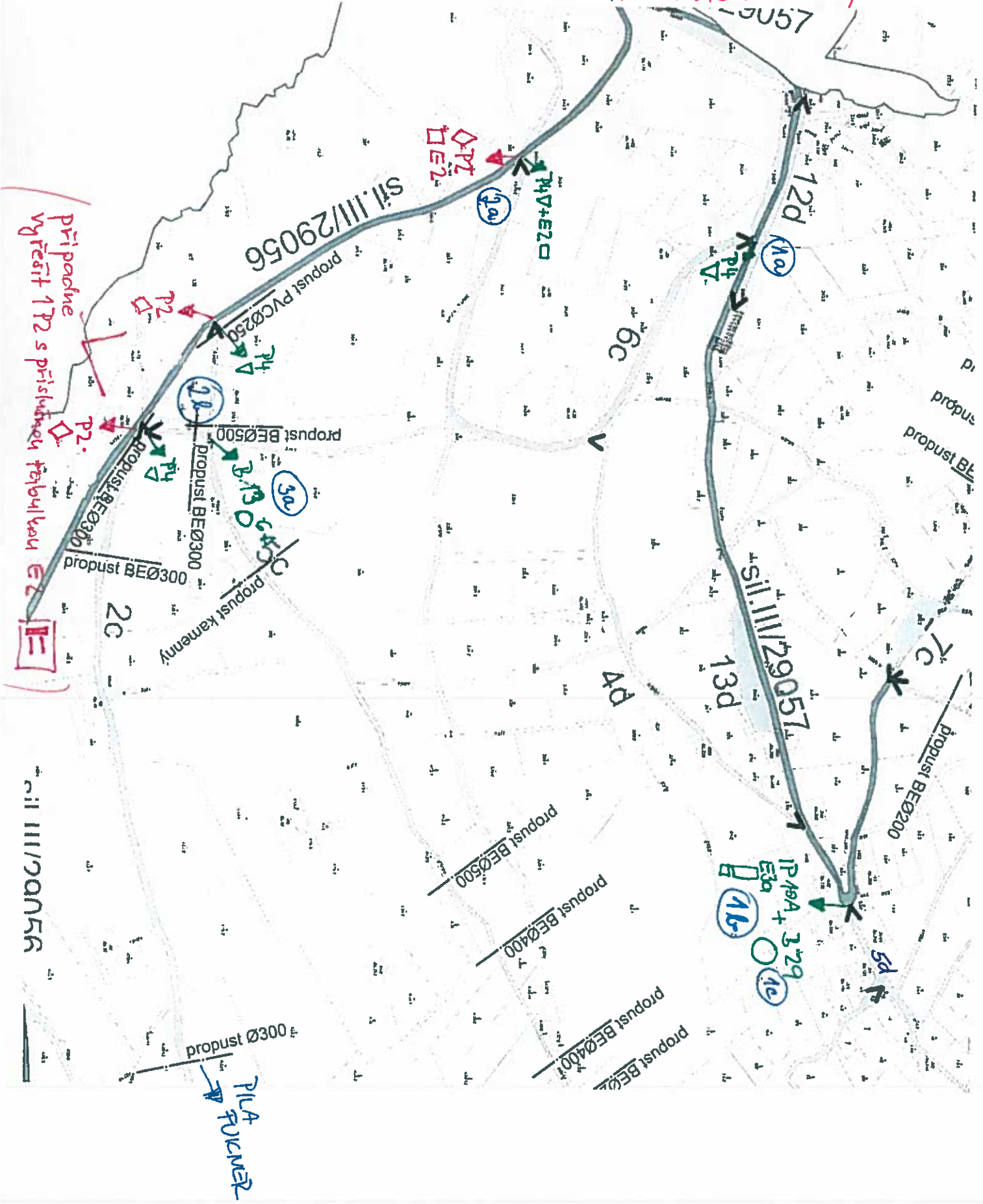
+ C 15a (zimni' vy'ba) na križovatce
14 a 29056
C 15b (zimni' vy'ba - konec)

3c

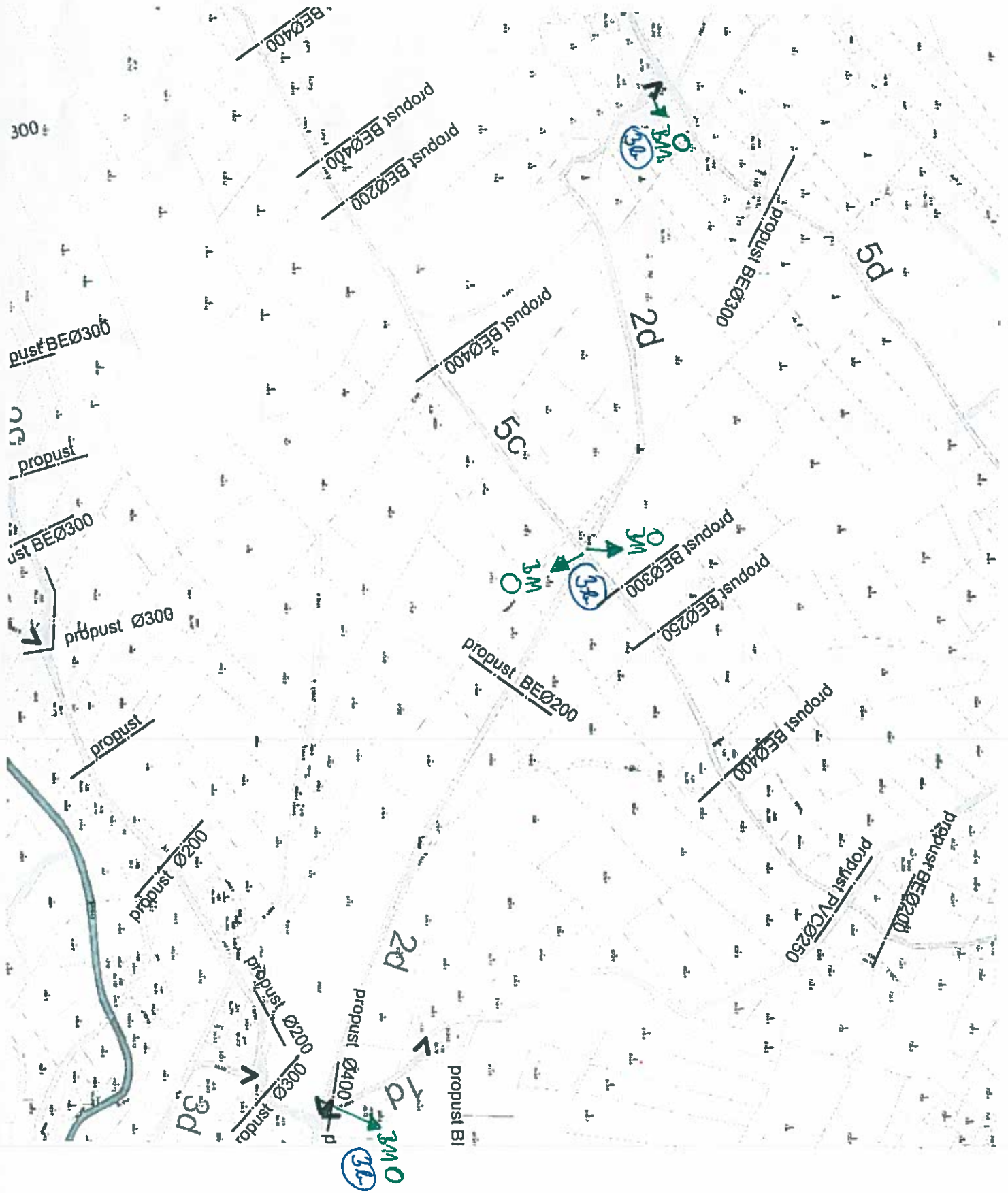
B

+ C 15a (zimní výbava) na křižovatce
290 a 2905b
C 15b (zimní výbava - konec)

Prípade
vyčistiť P2 s prístupnou
tabuľkou E2



C



D

vst BE Ø20

10C

just BE 600/1200

propust BE Ø200

NAHON

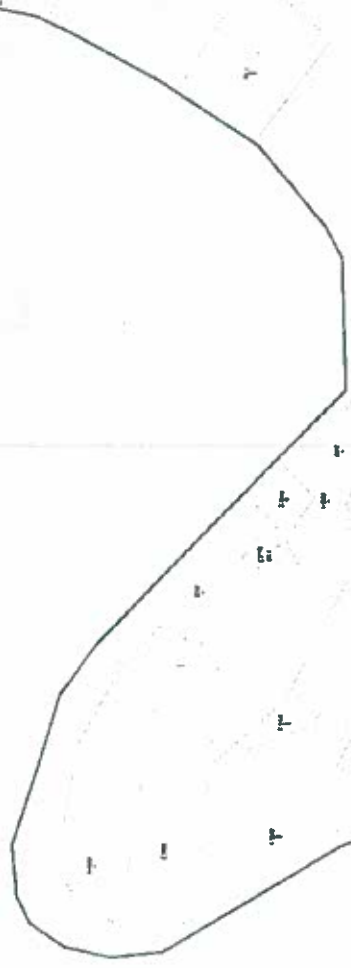
5C

propust káren 1000/1000
propust BE Ø1000

propust BE Ø300

AD JIZEROU

5B



3/13 6L
3a
3c
C 150
e 15 b

